

Series W-J41T-16Z

Globe Valve

Size: DN50-DN300

The series W-J41T Globe Valve is designed to regulate the flow in a pipeline. It's generally used in plumbing, HVAC, irrigation, commercial, and industrial application.

Features

- Simple structure
- Metal seat
- Packing replaceable under pressure

Pressure - Temperature

- Working Pressure: PN16
- Temperature Range: -15°C ~ 120°C

Test Pressures

Hydraulic

Shell: 24 bar

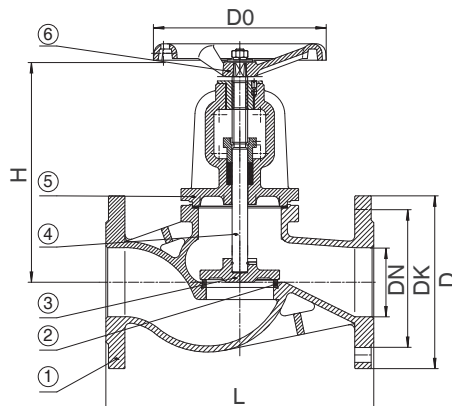
Seat: 17.6 bar

Material

NO.	Component	Material
1	Body	Cast Iron
2	Seat Ring	Bronze
3	Disc	Cast Iron
4	Stem	Stainless Steel
5	Yoke	Cast Iron
6	Handwheel	Cast Iron

Installation Dimensions

DIMENSIONS IN INCHES AND MILLIMETRES						
DK	L	DK	D	n-d	D0	H
2"	230	125	165	4-19	150	215
2.5"	290	145	185	4-19	190	238
3"	310	160	200	8-19	230	283
4"	350	180	220	8-19	230	385
5"	400	210	250	8-19	280	440
6"	480	240	285	8-23	320	488
8"	600	295	340	12-23	360	625
10"	730	355	405	12-28	400	703
12"	850	410	460	12-28	520	835



Specification

- Connection Standard: PN16 to EN1092-2/ MSS SP-85
- Nominal Diameter: DN50-DN300
- Medium: water oil gas
- Connection: Flange
- Corrosion Protection: internally and externally liquid epoxy painted

Characteristic Curve

