

Series W-WB132

Bronze Rising Gate Valve

Size: DN15-DN50

The Watts W-WB132 Bronze Rising Gate Valve is designed to cut off or connect water, noncorrosive liquid in the pipeline. It's generally used in building services, water treatment, etc.

Features

- Compact structure, reliable sealing
- Threaded bonnet
- Solid wedge disc
- Low pressure drop
- Unrestricted flow direction
- Easy maintenance

Pressure-Temperature

- Nominal Pressure: PN20
- Working Temperature: -20°C~120°C

Test Pressures

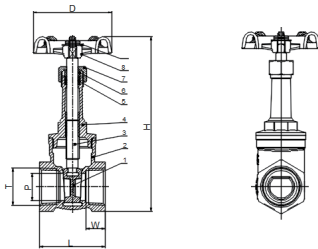
Pneumatic	Hydraulic
Shell: 6 bar	Shell: 30 bar
Seat: 6 bar	Seat: 22 bar

Material

No.	Component	Material	Standard
1	Valve Disc	Bronze	C87800
2	Valve Body	Bronze	C87800
3	Stem	Brass	C46500
4	Bonnet	Bronze	C87800
5	Packing	PTFE	
6	Packing Gland	Brass	HPb58-2
7	Nut	Brass	HPb58-2
8	Hand Wheel	Cast Iron with spray paint(Red)	
9	Name plate	AL	
10	Hand Nut	SUS	304

Installation Dimensions

Connection Dimensions: ASME B1.20.1 or BS EN 10226(BS21)



Size in.	P		D		H		L		M		Weight (g)
	mm	In.	mm	In.	mm	In.	mm	In.	mm	In.	
1/2"	13	0.51	60	2.36	110.5	4.35	50	1.97	15	0.59	0.65
3/4"	20	0.79	72	2.83	135	5.31	52	2.05	15	0.59	0.69
1"	25	0.98	72	2.83	160	6.3	60	2.36	18.5	0.73	1.01
1 1/4"	32	1.26	78	3.07	187	7.36	65	2.56	19	0.75	1.64
1 1/2"	38.1	1.5	90	3.54	210	8.27	69	2.72	19	0.75	4.20
2"	50	1.97	100	3.94	260	10.24	75.5	2.97	20.5	0.81	4.35

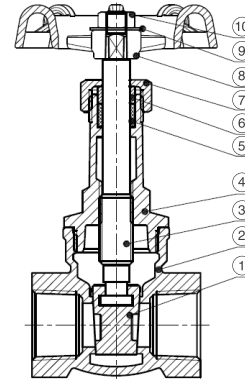
Watts reserves the right to change or modify product design, construction, specifications, or materials without prior notice and without incurring any obligation to make such changes and modifications on Watts products previously or subsequently sold.



Specification

- Connection Type: NPT to ASME B1.20.1
BSPT to BS21
- Medium: water, noncorrosive liquid

Approval



Characteristic Curve

