

Engineering Specification

Job Name _____
 Job Location _____
 Engineer _____
 Approval _____

Contractor _____
 Approval _____
 Contractor's P.O. No. _____
 Representative _____

LEAD FREE*

Series 3200 Dielectric Flanged Pipe Fittings

Sizes: 2" – 4"

Series 3200 Dielectric Flanged Pipe Fittings feature an iron pipe thread to iron pipe thread connection. These fittings are designed to be installed to prevent accelerated corrosion and deterioration in the piping system due to galvanic and stray current.

Pipeline isolation is used to electrically "split-up" pipelines into distinctive segments. This isolation of pipelines is essential to ensure that cathodic protection (impressed current) is applied and controlled, to prevent "long line" currents and to make the individual cathodic protection systems more effective and economic. Isolation also facilitates prevention of stray electric currents, decreasing corrosion. Isolation of pipelines can provide protection against earthing currents.

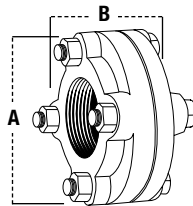
Features

- Iron pipe thread to iron pipe thread
- Designed and manufactured to the highest quality standards
- Rated to at 175psi (12.1 bar)

Specifications

A dielectric fitting shall be installed where indicated on the plans. The fitting shall feature an iron pipe thread to iron pipe thread. The fitting shall be a Watts Series 3200.

Materials – Dimensions – Weights



3200

Pressure – Temperature

Maximum Pressure: 175psi (12.1 bar)
 Maximum Temperature: 180°F (82°C)

NOTICE

The information contained herein is not intended to replace the full product installation and safety information available or the experience of a trained product installer. You are required to thoroughly read all installation instructions and product safety information before beginning the installation of this product.

NOTICE

Inquire with governing authorities for local installation requirements

*The wetted surface of this product contacted by consumable water contains less than 0.25% of lead by weight.

SIZE	MATERIALS					DIMENSIONS				WEIGHT	
	TAIL PIECE	ADAPTER †	BOLT & NUTS †	INSULATOR	GASKET	A		B		oz.	gm.
<i>in.</i>						<i>in.</i>	<i>mm</i>	<i>in.</i>	<i>mm</i>		
2	Gray Cast Iron	Gray Cast Iron	Steel	Polysulfone	Buna-N	5½	130	2½	54	8	3.6
2½	Gray Cast Iron	Gray Cast Iron	Steel	Polysulfone	Buna-N	5¾	149	2¾	70	12	5.4
3	Gray Cast Iron	Gray Cast Iron	Steel	Polysulfone	Buna-N	6¾	171	2¾	70	15	6.8
4	Gray Cast Iron	Gray Cast Iron	Steel	Polysulfone	Buna-N	9½	232	3	76	31	14.1

† Gray cast iron and steel components are zinc plated

Watts product specifications in U.S. customary units and metric are approximate and are provided for reference only. For precise measurements, please contact Watts Technical Service. Watts reserves the right to change or modify product design, construction, specifications, or materials without prior notice and without incurring any obligation to make such changes and modifications on Watts products previously or subsequently sold.



USA: T: (978) 689-6066 • Watts.com
 Canada: T: (888) 208-8927 • Watts.ca
 Latin America: T: (52) 55-4122-0138 • Watts.com