

# Engineering Specification

Job Name \_\_\_\_\_  
 Job Location \_\_\_\_\_  
 Engineer \_\_\_\_\_  
 Approval \_\_\_\_\_  
 Tag \_\_\_\_\_

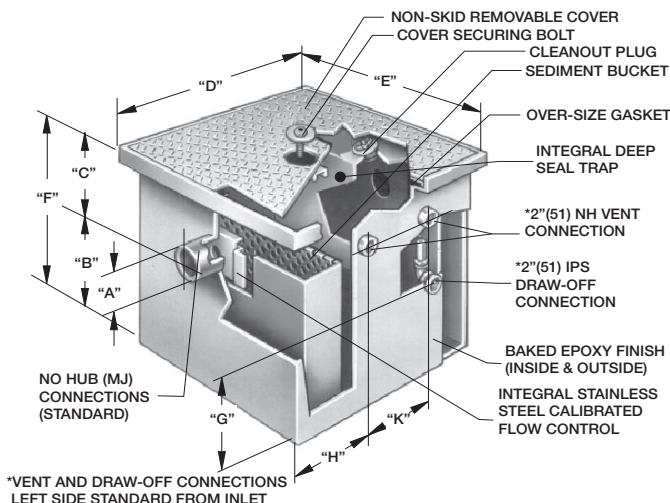
Contractor \_\_\_\_\_  
 Approval \_\_\_\_\_  
 Contractor's P.O. No. \_\_\_\_\_  
 Representative \_\_\_\_\_

## WO-300 Oil Interceptor on Floor or Recessed Installation

### Specification

Watts WO-300 epoxy coated inside and outside fabricated steel oil interceptor with flow rating of 10 to 75 GPM. Unit shall include sediment bucket, code approved deep seal trap, cover securing bolt(s), adjustable draw-off assembly, vent connections and stainless steel calibrated orifice plate.

**Function:** To separate lighter than water liquid pollutants from industrial waste. Requires separate vented waste storage tank by others.



Flow Rate		
Suffix	Description	
310	10 GPM	<input type="checkbox"/>
315	15 GPM	<input type="checkbox"/>
320	20 GPM	<input type="checkbox"/>
325	25 GPM	<input type="checkbox"/>
335	35 GPM	<input type="checkbox"/>
350	50 GPM	<input type="checkbox"/>
375	75 GPM	<input type="checkbox"/>

Optional Inlet/Outlet Sizes (When -0 is Selected)		
Suffix	Description	
-2	2"(51) Inlet/Outlet	<input type="checkbox"/>
-3	3"(76) Inlet/Outlet	<input type="checkbox"/>
-4	4"(102) Inlet/Outlet	<input type="checkbox"/>
-6	6"(152) Inlet/Outlet	<input type="checkbox"/>

Options		
Suffix	Description	
-ALC	Aluminum Cover	<input type="checkbox"/>
-DI	Dual Inlet	<input type="checkbox"/>
-E	Electronics	<input type="checkbox"/>
-F	Flange	<input type="checkbox"/>
-FC	Flange w/Membrane Clamp	<input type="checkbox"/>
-IP	Injection Port (specify location)	<input type="checkbox"/>
-HDC	Heavy Duty Cover, 1,000 lbs.	<input type="checkbox"/>
-XHDC	Extra Heavy Duty Cover, 10,000 lbs.	<input type="checkbox"/>
-0	Inlet & Outlet (other than standard)	<input type="checkbox"/>
-SS	Stainless Steel	<input type="checkbox"/>
-THD	Threaded Connections	<input type="checkbox"/>
-TEFC	Threaded External Flow Control	<input type="checkbox"/>
-MEFC	NH External Flow Control	<input type="checkbox"/>
-X#"	Extension	<input type="checkbox"/>

### NOTICE

The information contained herein is not intended to replace the full product installation and safety information available or the experience of a trained product installer. You are required to thoroughly read all installation instructions and product safety information before beginning the installation of this product.

Interceptor Catalog Number	Flow Rate GPM	A Inlet & Outlet	B Base To Center	C Top to Center	D Length	E Width	F Height	G Base to Center	H	K	DI Between Inlet Centers
WO-310	10	2"(51)	8 1/2"(216)	6"(152)	21 3/4"(552)	14"(356)	14 1/2"(368)	3 1/2"(89)	6"(152)	7"(178)	5"(127)
WO-315	15	2"(51)	10 1/2"(267)	6"(152)	22"(559)	15"(381)	16 1/2"(419)	4"(102)	7"(178)	7"(178)	5"(127)
WO-320	20	3"(76)	11 1/2"(292)	6"(152)	24"(610)	15 3/4"(400)	17 1/2"(443)	5"(127)	7"(178)	7"(178)	5 1/2"(140)
WO-325	25	3"(76)	12"(305)	6"(152)	26"(660)	16 1/2"(419)	18"(457)	6"(152)	7"(178)	7"(178)	5 1/2"(140)
WO-335	35	4"(102)	14"(356)	6"(152)	30"(762)	18"(457)	20"(508)	8"(203)	10"(254)	7"(178)	6 1/2"(165)
WO-350	50	4"(102)	16"(406)	6"(152)	32"(813)	22"(559)	22"(559)	9"(229)	10"(254)	7"(178)	6 1/2"(165)
WO-375	75	4"(102)	18"(470)	6"(152)	36"(914)	24"(610)	24 1/2"(623)	12"(305)	10"(254)	7"(178)	6 1/2"(165)

Watts product specifications in U.S. customary units and metric are approximate and are provided for reference only. For precise measurements, please contact Watts Technical Service. Watts reserves the right to change or modify product design, construction, specifications, or materials without prior notice and without incurring any obligation to make such changes and modifications on Watts products previously or subsequently sold.



**USA:** T: (800) 338-2581 • Watts.com  
**Canada:** T: (888) 208-8927 • Watts.ca  
**Latin America:** T: (52) 55-4122-0138 • Watts.com