

Series R5003/R5003N/R5003G

R5003/R5003N/R5003G-202405

Brass Non-return Foot Valve

Size: DN15-DN50

The Watts R5003/R5003N/R5003G non-return foot valve is designed for clear water pumping systems with substantial flow, requiring large valves for supply systems. It guarantees excellent hydraulic performance.

Features

- Operates in any position
- Low head loss
- Silent & robust
- Does not generate hammering

Pressure-Temperature

- Nominal Pressure: PN16
- Temperature Range: -20°C~110°C

Test Pressures

Pneumatic	Hydraulic
Shell: 6 bar	Shell: 24 bar
Seat: 6 bar	Seat: 17.6 bar

Material

NO.	Component	Material
1	Body	Brass
2	Stem	Brass
3	Spring	Stainless Steel
4	Disc	Brass
5	Rubber	Nbr
6	Bonnet	Brass
7	Screen	Plastic+Stainless Steel

Installation Dimensions

DN	A	L	W	Weight(kg)
DN15	30±1	81±1	23.6±1	0.128
DN20	40±1	89±1	30.2±1	0.2
DN25	43.5±1	100±1.5	37±1	0.248
DN32	55.7±1	120±1.5	46±1	0.425
DN40	64±1	130±1.5	52±1	0.6
DN50	75.5±1	146±2	65±1	0.8

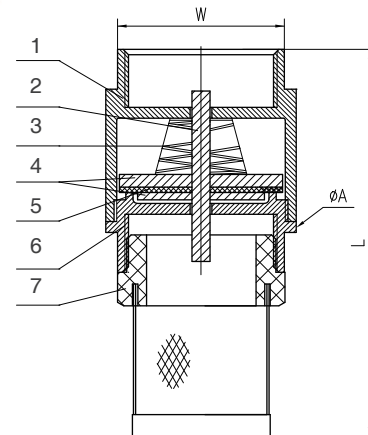
*All dimensions are in mm.



Specification

- Connection Standard: BSPT to ISO 7-1, NPT to ASME 1.20.1,G Thread
- Test Standard: BS EN 12266-1
- Medium: water

Approval



Watts reserves the right to change or modify product design, construction, specifications, or materials without prior notice and without incurring any obligation to make such changes and modifications on Watts products previously or subsequently sold.

